

Retail Advantage®

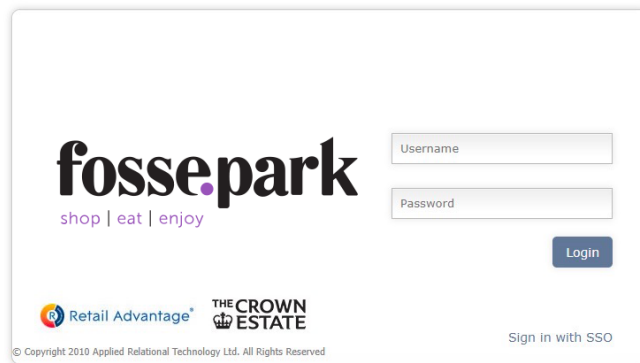
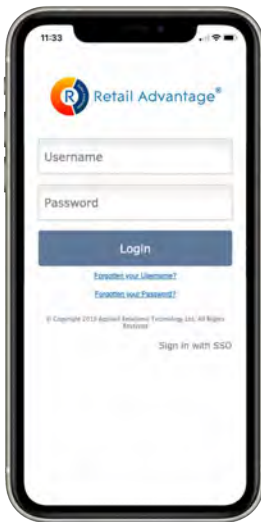
Quick Start Guide

Accessing Retail Advantage

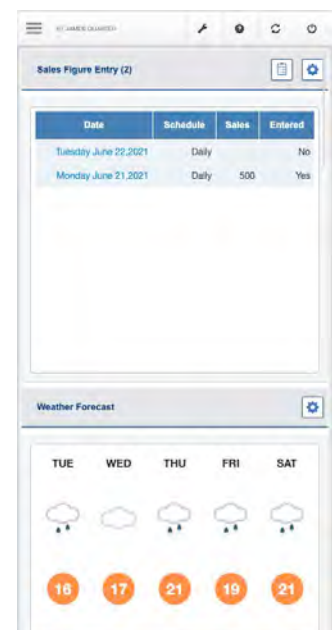
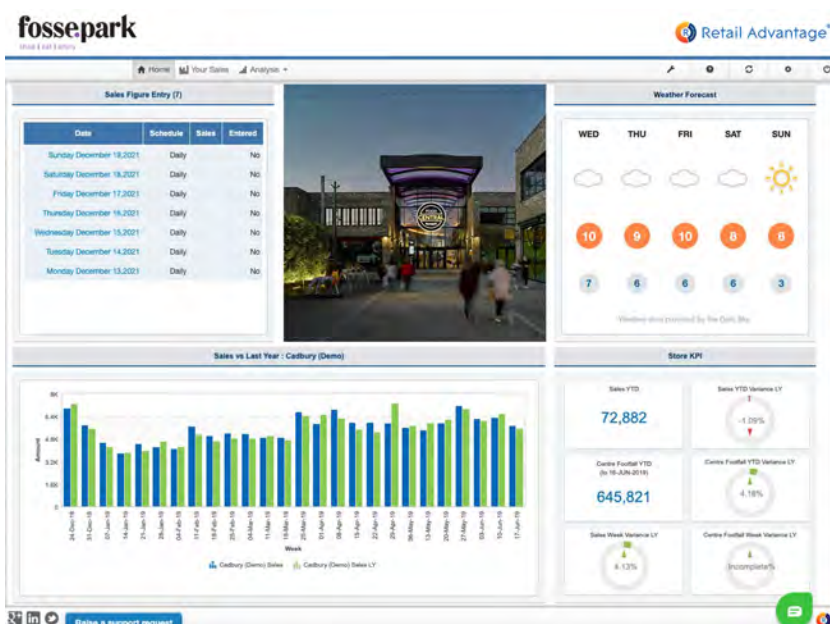
Accessing Retail Advantage is very similar regardless of whether you use a desktop / laptop or mobile device. Simply open an internet browser and enter the following into the address bar : app.retailadvantage.co.uk/fossepark



You can access the Retail Advantage on a laptop, desktop pc or your mobile device. This delivers an experience optimised for that device, mobile or tablet.



Enter your Username and Password in the boxes and click the Login button. Your Landing Page will then be displayed:

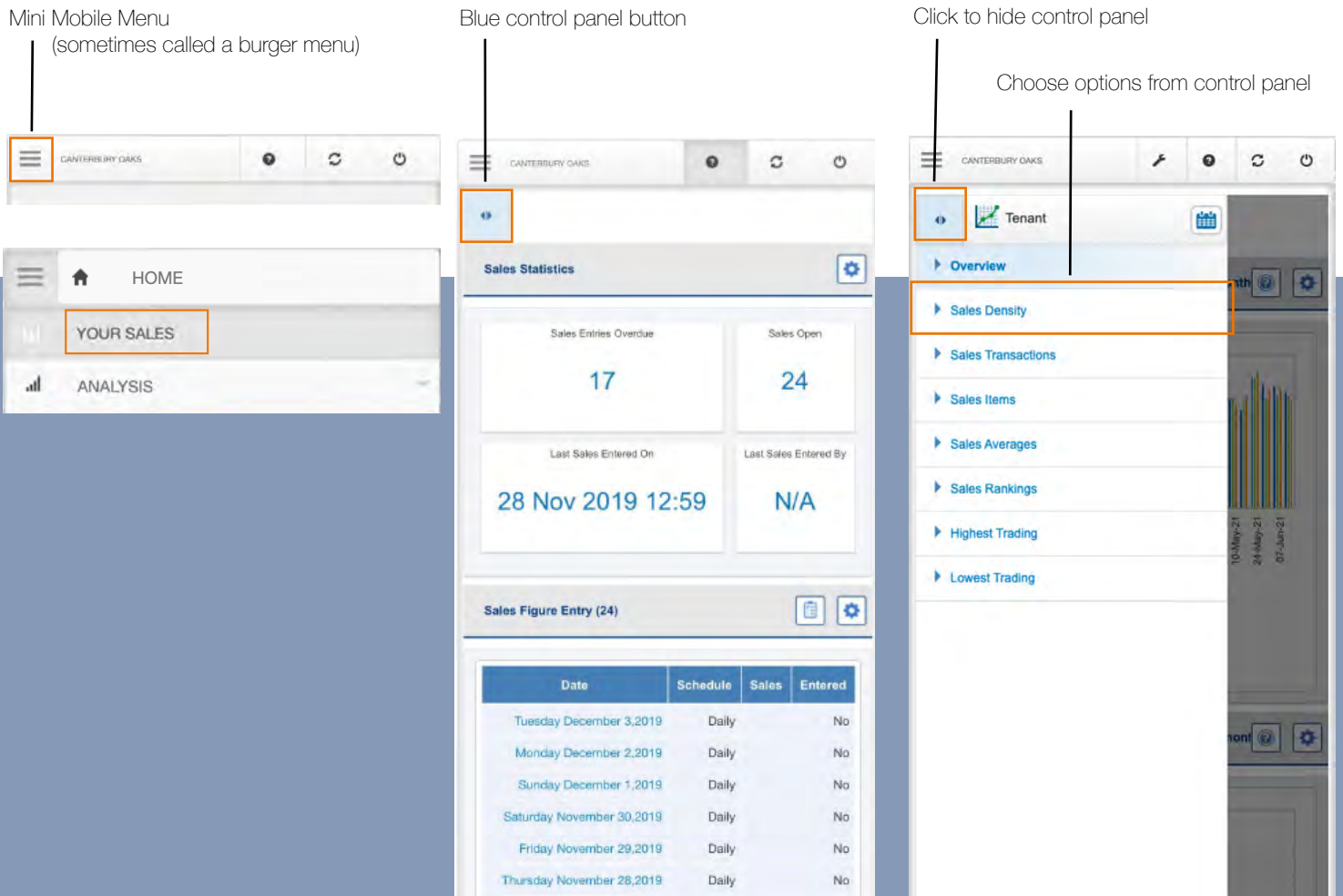


Mobile Views

If you are using Retail Advantage on a mobile device, content will be presented differently. However, most operations will be performed in a very similar way.

Click on the mini Mobile Menu at the top left to navigate to different modules. When you are in different modules, the menu control-panels that would normally sit on the left of the action Window are hidden. To access these controls, click on the blue button at the top left, just below the mini menu.

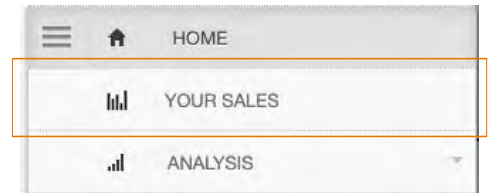
This will reveal the control panel. When you have made your selection from this control panel, you may need to hide the control panel again to view the updated page.



If you are using an iPad, the service will display Retail Advantage with an experience closer to the full standard application.

Your Sales

The Your Sales module provides access to submit turnover data, view info on recent data logged and access performance Ranking statistics (where available).



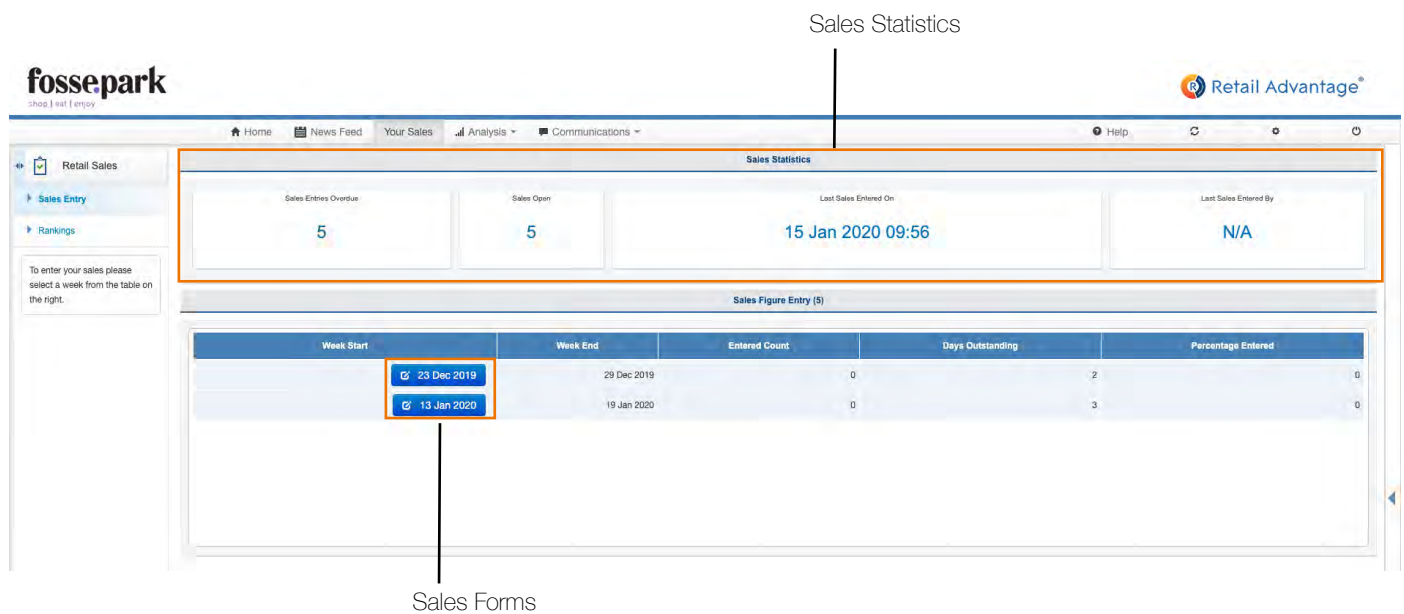
To go there, choose "Your Sales" form the navigation menu.

Submitting sales Data

Submission of sales figures can be accomplished from the main Your Sales page. To the right of the Action window you will see two areas. Sales Statistics at the top and Sales Figure entry below.

The Sales Statistics box provides information on the number of sales forms that are currently open to supply data to. There is also information on any form that are currently overdue and notes on recently submitted data.

Sales Statistics



Week Start	Week End	Entered Count	Days Outstanding	Percentage Entered
23 Dec 2019	29 Dec 2019	0	2	0
13 Jan 2020	19 Jan 2020	0	3	0

Sales Forms

You can also access sales forms from the top of the Home Page on a mobile device or the Sales Sales Figure Entry widget from your home dashboard.

Clicking on a date listed will take you directly to the sales form to supply data.



Date	Schedule	Sales	Entered
Tuesday January 14, 2020	Daily		No
Monday January 13, 2020	Daily		No
Sunday January 12, 2020	Daily		No
Saturday January 11, 2020	Daily		No
Friday January 10, 2020	Daily		No

Click to access sales forms

Sales Entry
Tuesday December 3, 2019
Monday December 2, 2019
Sunday December 1, 2019
Saturday November 30, 2019
Friday November 29, 2019
Thursday November 28, 2019

Any outstanding sales forms that are listed in the Sales Figure Entry Box can be accessed by clicking on the blue button marked with a date for each form. This will bring up the data submission window.

Date	Total Net	Total VAT	Total Gross	Transactions	Items	Comments
Mon 13th Jan	<input type="text"/>	<input type="text"/>	<input type="text"/>	<input type="text"/>	<input type="text"/>	<input type="text" value="Please enter Comments"/>

Please note, when using Retail Advantage on a mobile device, you will need to ensure you have access to either a WIFI network or mobile data connection to send your sales data to the Retail Advantage database.

The questions in each form will be specific to each retail destination. Any fields in columns marked with a * are mandatory. To submit your sales data, type in answers to the questions in the form.

Type values into the boxes provided, checking carefully as you go.

If you are part-way through a week, you can submit some daily entries and save these down by clicking the blue submit button.



Confirm Daily Entries

Total Net: £5000

Total VAT: £1000

Total Gross: £6000

Transactions: 375

Comments: Power issues today - store lighting intermittent.

Turnover this year is 260.93% down on last year, are you sure you want to continue?

Retail Advantage will perform some calculations to check if any data appears incorrect. If something appears wrong, error messages will appear in red. For example, this will happen when sales data does not add up or if figures seem to be unusually low or high.

If any values are flagged-up by the system, please double-check your numbers. Gross figures for example must be a total of Net + VAT.

If Retail Advantage suggests your data is particularly high or low but you are sure the numbers are correct, you can still confirm these amounts and proceed.

In this instance we would recommend submitting a note in the comments box.



If the store was closed, you can simply click on the "Store Closed" button to complete the form and mark the store as unable to trade for the day.

CANTERBURY OAKS

Total Net

Total VAT

Total Gross

Transactions

Comments

161 characters remaining